

Retaining disc with screw DHT S

The installation-friendly polyamide retaining disc for panel building materials



Pressure-resistant insulation boards on timber constructions



Pressure-resistant insulation boards on timber constructions

Applications

To fix pressure-resistant insulating materials in plaster façades, such as:

- Polystyrene
- PU panels
- Light building boards made of wood wool
- Cork boards / coir matting

Advantages

- The DHT-S screw allows setting without pre-drilling, thus saving a stage of installation.
- The plug reduces the heat transmission and prevents marks on the plaster surface.
- The extremely thin disc construction allows for use with thin layers of plaster and reinforcements and offers maximum flexibility.

Certificates



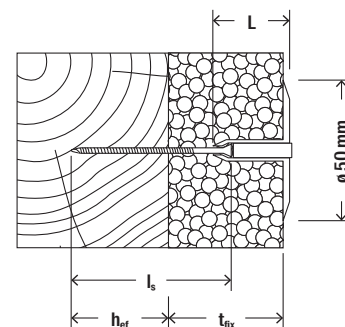
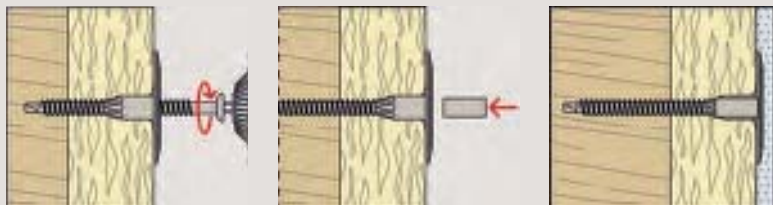
Building materials

- Wood and wooden materials
- Board thickness up to 0.8 mm

Functioning

- Non-bearing layers, such as adhesive, are to be included in the useful length.
- The retaining disc with screw is set in push-through installation with a cordless screwdriver.
- A PH2 bit is required for installation.
- After installation, seal the screw hole with the enclosed plug.

Installation DHT S



Technical data

Retaining disc with screw DHT S



DHT 50/ ... disc



DHT S

Item	Item No.	Colour	Usable length t_{fix} [mm]	Shaft length L [mm]	Screw length l_s [mm]	Effect. anchorage depth h_{ef} [mm]	Disc \varnothing [mm]	Sales unit [pcs]
DHT 50/20 W	044490	white	—	20	—	—	50	500
DHT 50/40 W	044491	white	—	40	—	—	50	500
DHT S 30 W	044390	white	30	20	45	25	50	500
DHT S 50 W	044392	white	40 - 50	20	65	25	50	500
DHT S 70 W	044394	white	60 - 70	40	65	25	50	500
DHT S 80 W	044395	white	70 - 80	40	75	25	50	500
DHT S 100 W	044388	white	90 - 105	40	100	25	50	500
DHT S 120 W	044389	white	110 - 125	40	120	25	50	500
DHT S 150 W	516154	white	140 - 155	40	150	25	50	500